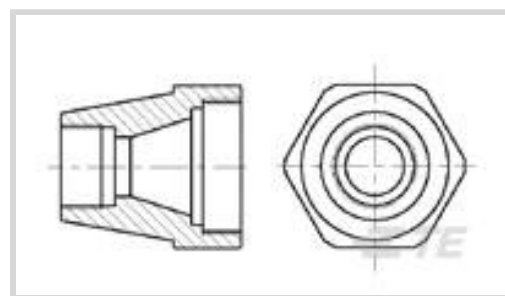




Connectors > Circular Connectors > Circular Connector Accessories > Unscreened Circular Connector Backshells & Clamps



Backshell & Clamp Accessory Type: **Backshell Extenders**

Compatible With Circular Connector Shell Size: **23**

Body Orientation: **Straight**

Accepts Cable Diameter (Max): **30.48 mm [1.2 in]**

Protective Cover: **Without**

Features

Product Type Features

Product Type	Accessory
Backshell & Clamp Accessory Type	Backshell Extenders
Protective Cover	Without

Body Features

Backshell Extender Material	Glass-Filled Thermoplastic
Cable Clamp Material	Glassfiber Filled Thermoplastic
Cable Clamp Flammability Rating	UL 94V-1
Backshell Extender Color	Black
Cable Clamp Color	Black

Mechanical Attachment

Screw & Hole Thread Size	PG21
--------------------------	------

Housing Features

Body Orientation	Straight
------------------	----------

Dimensions

Accepts Cable Diameter (Max)	30.48 mm[1.2 in]
------------------------------	------------------

Operation/Application

Compatible With Circular Connector Shell Size	23
---	----

Packaging Features

Packaging Quantity	20
--------------------	----

Packaging Method	Carton
------------------	--------

Other

Comment	For shell size 23 only.
---------	-------------------------

Product Compliance

[For compliance documentation, visit the product page on TE.com>](#)

EU RoHS Directive 2011/65/EU	Compliant
------------------------------	-----------

EU ELV Directive 2000/53/EC	Compliant
-----------------------------	-----------

China RoHS 2 Directive MIIT Order No 32, 2016	No Restricted Materials Above Threshold
---	---

EU REACH Regulation (EC) No. 1907/2006	Current ECHA Candidate List: JUNE 2022 (224) Candidate List Declared Against: JUNE 2022 (224) Does not contain REACH SVHC
--	---

Halogen Content	Low Halogen - Br, Cl, F, I < 900 ppm per homogenous material. Also BFR/CFR/PVC Free
-----------------	---

Solder Process Capability	Not applicable for solder process capability
---------------------------	--

Product Compliance Disclaimer

This information is provided based on reasonable inquiry of our suppliers and represents our current actual knowledge based on the information they provided. This information is subject to change. The part numbers that TE has identified as EU RoHS compliant have a maximum concentration of 0.1% by weight in homogenous materials for lead, hexavalent chromium, mercury, PBB, PBDE, DBP, BBP, DEHP, DIBP, and 0.01% for cadmium, or qualify for an exemption to these limits as defined in the Annexes of Directive 2011/65/EU (RoHS2). Finished electrical and electronic equipment products will be CE marked as required by Directive 2011/65/EU. Components may not be CE marked. Additionally, the part numbers that TE has identified as EU ELV compliant have a maximum concentration of 0.1% by weight in homogenous materials for lead, hexavalent chromium, and mercury, and 0.01% for cadmium, or qualify for an exemption to these limits as defined in the Annexes of Directive 2000/53/EC (ELV). Regarding the REACH Regulation, the information TE provides on SVHC in articles for this part number is based on the latest European Chemicals Agency (ECHA) 'Guidance on requirements for substances in articles' posted at this URL: <https://echa.europa.eu/guidance-documents/guidance-on-reach>

Compatible Parts



Also in the Series | AMP CPC



Circular Connector Adapters(7)



Circular Connector Boots & Strain Relief(6)



Circular Connector Caps & Covers(16)



Circular Connector Hardware(3)



Circular Connector Keying Plugs(2)



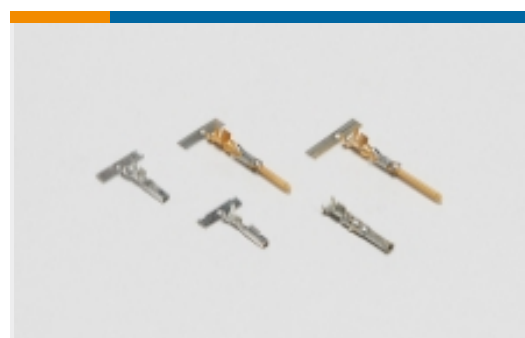
Circular Connector Seals(36)



Circular Power Connectors(467)



Insertion & Extraction Tools(1)



Power Contacts(6)



Sealing Sleeves(2)



Unscreened Circular Connector Backshells & Clamps(56)

Documents

Product Drawings

[T238GA-PG21=INDUSTRIAL CONNECT](#)

English

Datasheets & Catalog Pages

[1-1773902-9_CPC_Catalog](#)

German

[1-1773902-9_CPC_Catalog](#)

English

[1-1773902-9_CPC_Catalog](#)

[1-1773902-9_CPC_Catalog](#)

Japanese